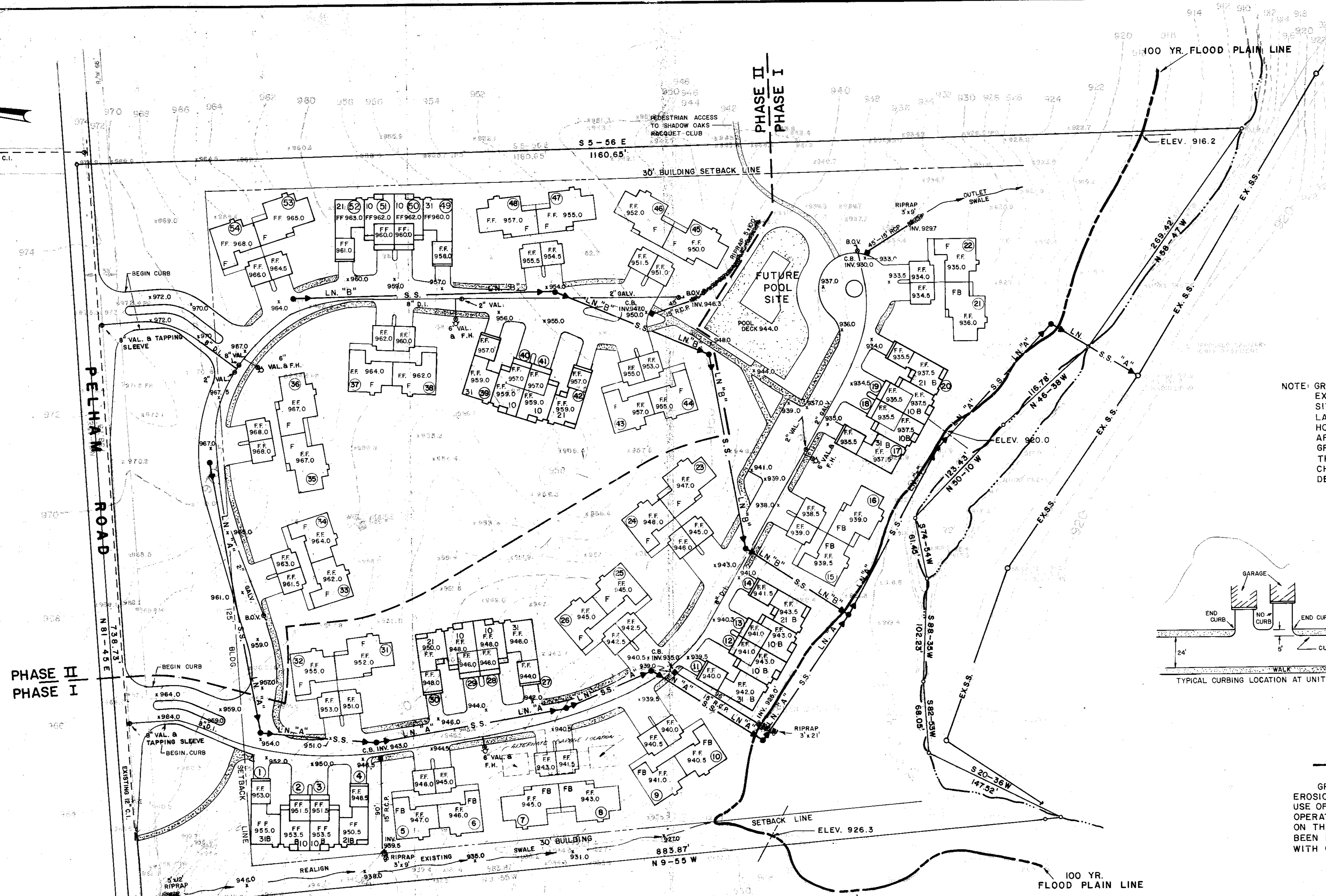
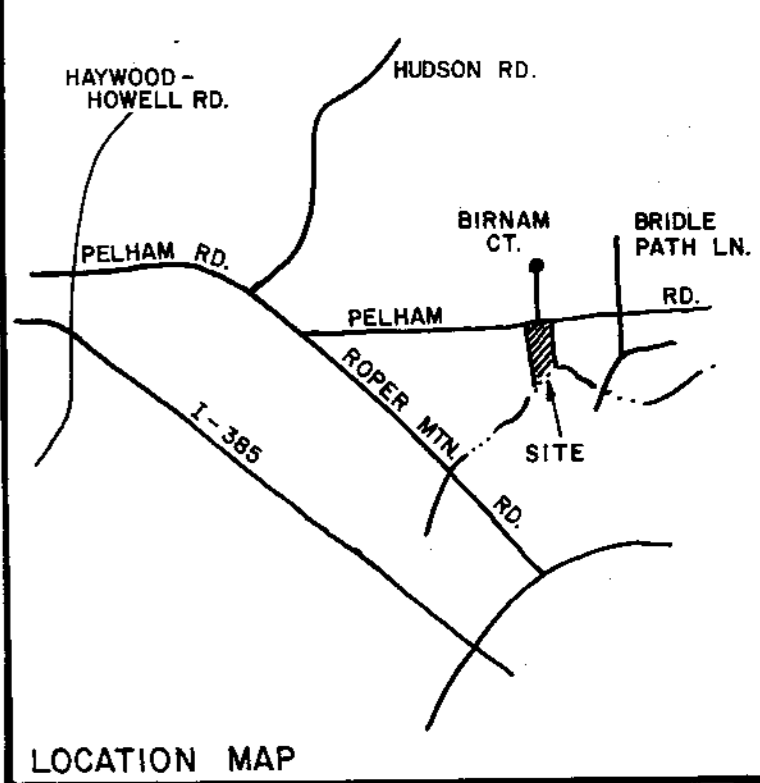
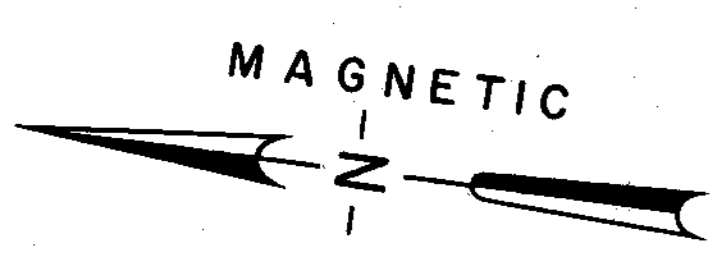
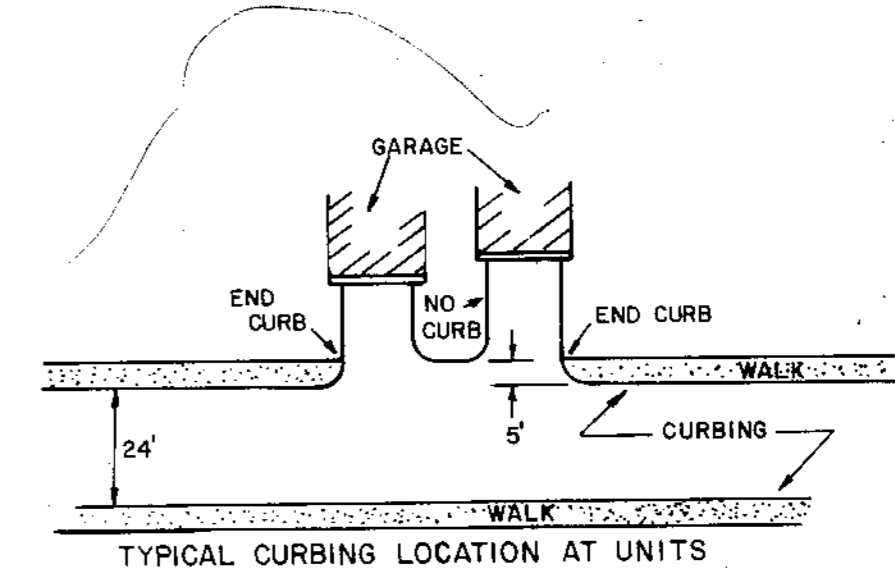


MICROFILMED



NOTE: GRADING CONTRACTOR IS NOT TO DISTURB EXISTING AMERICAN HOLLIES ON THE SITE. LANDSCAPE CONTRACTOR WILL REMOVE HOLLIES FROM AREAS TO BE GRADED AFTER ACCESS IS SUPPLIED BY THE GRADING CONTRACTOR. THE GRADING CONTRACTOR WILL BE CHARGED \$100 PER TREE THAT IS DESTROYED.



GR: FILED
Nov 29 4 56 PM '82
DORRIS J. HANKESSLEY
R.M.C.

EROSION CONTROL

GRADING CONTRACTOR TO PROVIDE EROSION AND SILTATION CONTROL BY THE USE OF HAY BALES DURING THE GRADING OPERATION. HAY BALES TO BE MAINTAINED ON THE SITE UNTIL AREAS THAT HAVE BEEN DISTURBED BECOME STABILIZED WITH GROUND COVER.

PARKING SUMMARY

GARAGE	108 SPACES
DRIVEWAY	108 SPACES
OTHER	9 SPACES
TOTAL PARKING	225 SPACES

PARKING REQUIRED:
2.85/SPACES PER UNIT X 54 UNITS =
154 SPACES

LEGEND

- 10, 21, 31 2 STORY CONDOMINIUMS 12 UNITS
- 10B, 21B, 31B " " / BASEMENT 12 UNITS
- F 1 STORY FLATS 21 UNITS
- FB " " / BASEMENT 9 UNITS
- ⑦ INDICATES UNIT NUMBER
- FF INDICATES FINISHED FIRST FLOOR OR FINISHED GARAGE ELEVATION.

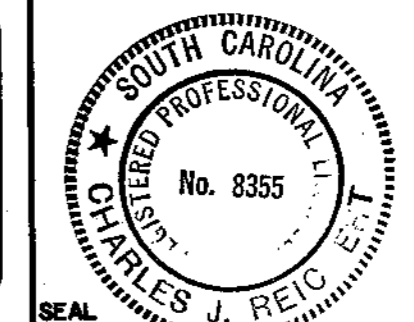
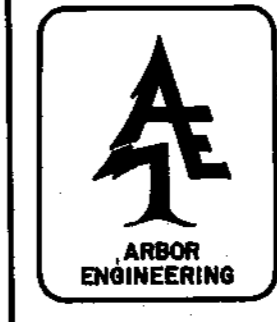
CERTIFICATE OF APPROVAL FOR RECORDING

"I hereby certify that the subdivision plat shown herein has been found to comply with the Subdivision Regulations for Greenville County and that it has been approved for recording in the office of the County Register of Messo Conveyance."
11/29/82 DATE *F. J. Forbes* DIRECTOR OF PLANNING GREENVILLE COUNTY PLANNING COMMISSION

- TOPSOIL TO BE USED IN BERMS AND GRADING AROUND UNITS.
- FLOOD PLAIN INFORMATION CALCULATED BY ARBOR ENGINEERING, INC.
- PROPERTY SURVEYED ACCORDING TO DEED OF RECORD AS SHOWN IN DB 1172-50.
- 6" & 8" VALVES OPEN RIGHT 2" VALVES OPEN LEFT FIRE HYDRANTS TO BE 3-WAY & OPEN RIGHT
- DRAINAGE SWALES TO BE PROVIDED AROUND AND BETWEEN UNITS.

PRINTED
NOV 29 1982
ARBOR ENGINEERING, INC.

Arbor Engineering, Inc.
P.O. BOX 263, GREENVILLE, S.C.
LANDSCAPE ARCHITECTS-ENGINEERS-RECREATIONAL PLANNERS



NO.	DATE	BY	DESCRIPTION	APPR.
7	23 NOV 1982	STH	REV. BLDGS 53 & 54	CJR
6	22 NOV 1982	STH	ADDED PKG. SUMMARY & PED. ACCESS	CJR
5	3 NOV 1982	WNS	ADDED DEED REFERENCE	CJR
4	21 OCT 1982	RS	REV. BLDG. LOCATIONS & GRADING	CJR
3	26 MAR 1982	STH	REV. GRADING UNITS 5-16, 23-26, 31 & 32	CJR
2	1 MAR 1982	STH	REV. LAYOUT OF FLATS	CJR
1	26 JAN 1982	STH	REV. FRONT ENTRANCE	CJR

1200 PELHAM

SITE PLAN

GREENVILLE	SOUTH CAROLINA
DRAWN: WFB	DATE: JAN 5, 1982
CHECK: CJR	SCALE: 1" = 50'
DATE: 11/29/82	SHEET 3 OF 7
NO. 80049	10,000

12976
9-8-2

